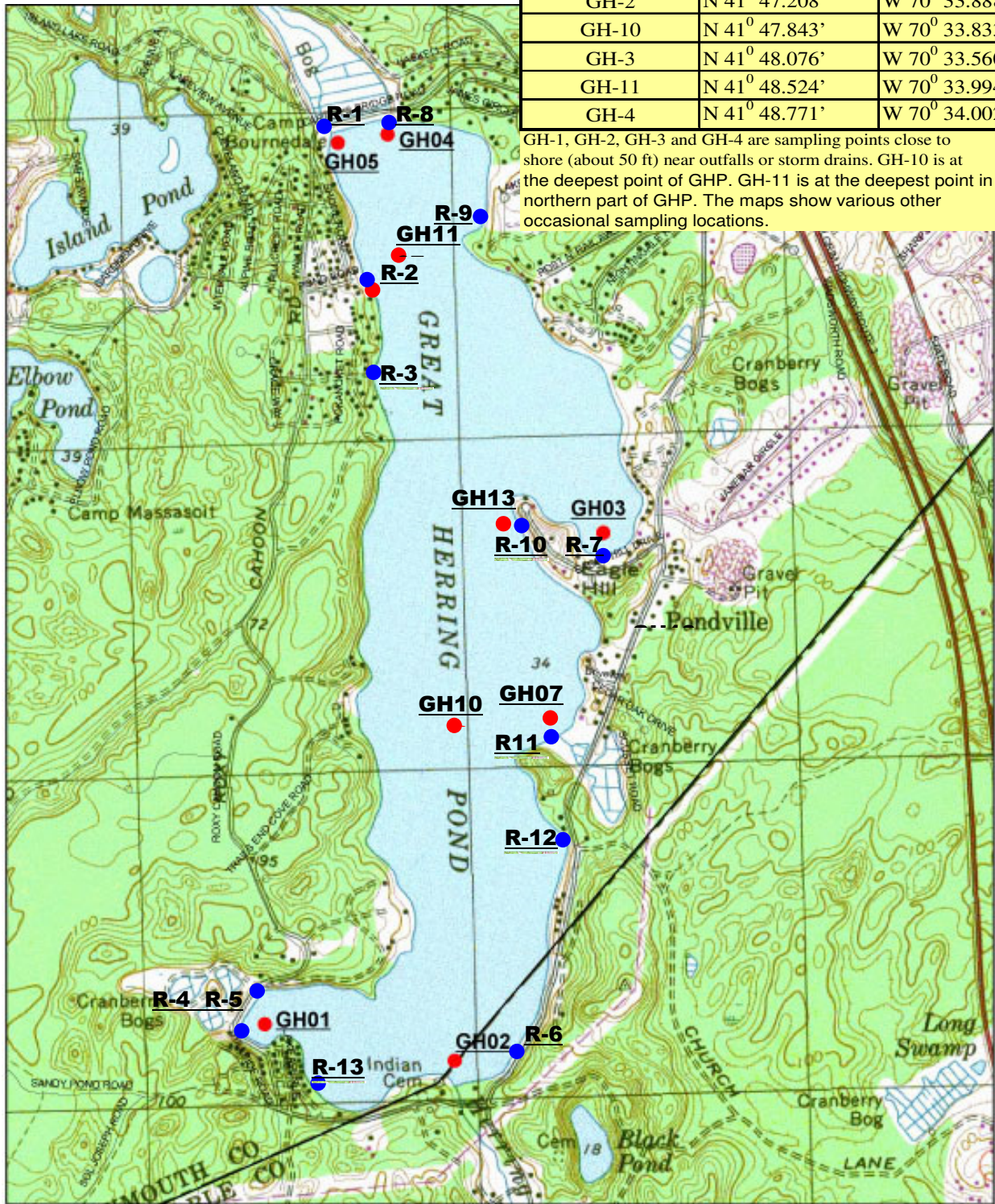


Great Herring Pond, GPS coordinates of water sampling spots.

GH-1	N 41° 47.305'	W 70° 34.303'
GH-2	N 41° 47.208'	W 70° 33.888'
GH-10	N 41° 47.843'	W 70° 33.833'
GH-3	N 41° 48.076'	W 70° 33.560'
GH-11	N 41° 48.524'	W 70° 33.994'
GH-4	N 41° 48.771'	W 70° 34.002'

GH-1, GH-2, GH-3 and GH-4 are sampling points close to shore (about 50 ft) near outfalls or storm drains. GH-10 is at the deepest point of GHP. GH-11 is at the deepest point in the northern part of GHP. The maps show various other occasional sampling locations.



Town of Plymouth

Disclaimer
 The Town of Plymouth makes no claims, no representations and no warranties, concerning the validity, accuracy or reliability, the timeliness or the accuracy of the GIS data and/or GIS products furnished by the Town. Please refer to the geographic coordinates only. Other data created by Town GIS Dept and/or MAUGS. Aerial photography from MAUGS.

- = runoff collection sites
- = Sampling Sites



1 inch equals 1,250 feet