

An experimental interactive Quick Response (QR)-coded educational Pine Barrens Plant ID Trail is fully operational in the recently dedicated David E. Alper Nature Preserve.

Harvard University's Arnold Arboretum curatorial assistant Irina Kadis and entomologist Alexey Zinovjev collaborated with HPWA volunteers. They updated a list of 145 tree, shrub, and herb species present in the preserve <http://salicicola.com/mobile/alper/alper_plantlist.html>, of which 123 species are native. 30 of the key species along the 1/3-mile central preserve road are now tagged with QR-coded home-printed and laminated name labels. Each label can be scanned with any of several free Android or Apple mobile phone or tablet apps to access [online text descriptions and photos](#) for the named species. All labeled species locations are shown on an interactive "GPS Visualizer" map, also accessible by mobile device.

Plant ID Trail Directions:





**QR (Quick Response) Coded Plant ID Labels
in David E. Alper Nature Preserve**

Example plant label tag:



Sweet Pepperbush
Clethra alnifolia
<http://salicicola.com/mobile/alper/docs/sweetpepperbush.html>

There are 30 different woody and herbaceous species labeled along Alper Preserve trails.

How to use QR-coded labels
If you have a smartphone or tablet, you can use these codes quite easily. Download a QR code scanning app from your device's app store, open it, and aim it at close range to scan the example QR block above or any QR image block on the plant labels found throughout Alper Preserve. The app will decode the QR image and immediately open a web page on your device. You will find a description of the plant species named on the label along with several photos. There is also a link that will take you to additional photos for that species.

To help you find all the labels, an interactive "GPS Visualizer" map showing locations of labeled plants is available at <http://bit.ly/2vMhxnE>

What else you can do

- Hone observation skills: walk the trail looking for all 30 identification labels
- Test yourself: look for additional unlabeled specimens of the plants you've identified
- Review: use the GPS Visualizer map on your return to rediscover plants, or find those missed
- Summon the full list of plants found in Alper Preserve (145 species, 123 native as of August 2017) with links to Salicicola images for each species: <http://salicicola.com/mobile/alper/plantlist.html>. Armed with this list, you may identify more plants.
- You may post photographs of unknown plants at <http://fmssf.salicicola.com/questions> and find out what they are this way.

Project completed by the members of HPWA
Claire Esterman, Brian Harrington, Martha Sheldon, and Lee Pullis
and the authors of Salicicola.com Alexey Zinovjev and Irina Kadis. Photographs from Salicicola.com

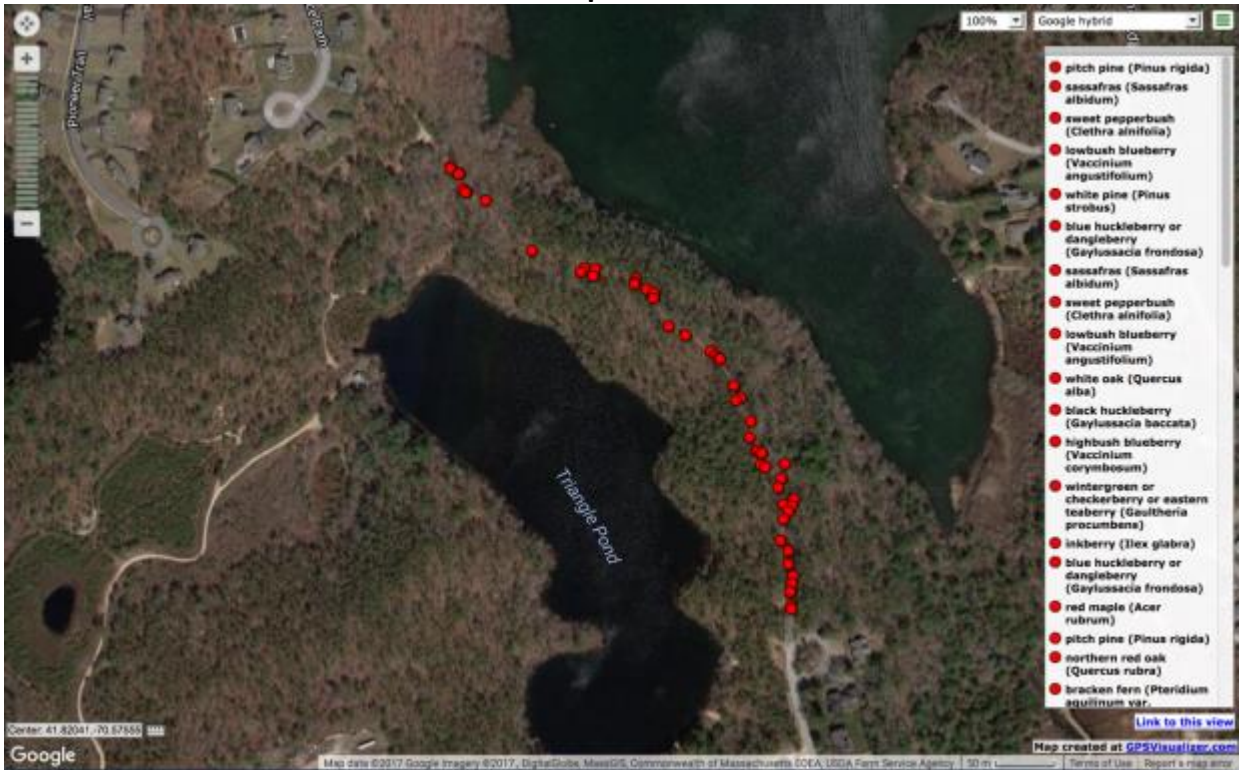


Trail entrance in David E. Alper Nature Preserve



Walking sticks and wizard wands are available

Online Interactive Labeled Plant Locator Map:



View interactive map online at: <http://salicicola.com/mobile/alper/maps/tagged.html>

Alper Plant ID Trail Resources available in the field via QR codes (Scan and save in your app “history” or “favorites” for quick reference along the trail.)



**D.E. Alper Nature Preserve Map,
Plymouth @ Salicicola**

<http://salicicola.com/mobile/alper/>



**Plants of D.E. Alper Nature Preserve,
Plymouth**

<http://salicicola.com/mobile/alper/plantlist.html>



GPS Visualizer map of tagged plants

<http://salicicola.com/mobile/alper/maps/tagged.html>



Alper Preserve plant narratives & photos

<http://salicicola.com/mobile/alper/docs/>

The trail provides education and passive recreation in a globally rare Pine Barrens ecosystem for residents, and is potentially a regional and international eco-tourism attraction. The trail may also provide a model for replication in several other Town open spaces already similarly inventoried by Kadis and Zinovjev.

Samples of plant labels in place



Laminated owl tags with common names only are provided for quick spotting by kids

Although the home-printed and laminated labels may be temporary and considered experimental, there has been no vandalism, or loss to weather (including a 3" rain) or to wildlife in the first 40 days of marking and testing.

HPWA bench for placement in the Alper Preserve - Constructed using Wildlands Trust plans and pressure treated, ground contact rated 2x4's. HPWA also has a wood duck nest box to donate and place.

